

ABAX TRIPLOG INSTALLATION GUIDE

Contents

1. The ABAX Triplog unit
2. GPS and GSM signal strength
3. Windshield installation
4. Concealed external installation
5. Concealed internal installation (battery in the cabin)
6. Inaccessible battery installation

1. The ABAX Triplog unit

The ABAX Triplog unit is designed to be an easy two wire installation that can be fitted in 10 minutes. In standard form, it consists of an antenna housed within the compact black unit, a red positive and black negative connector and 1.5 meters of cable. An optional third yellow wire and connector can be used for other digital inputs.

The ABAX Triplog unit requires power from a constant 12V or 24V source, such as the vehicle battery or, for example, a jump-start point. Connecting the units positive power cable to a switched feed will not only impede the operation of the unit, but also likely damage the unit and void your lifetime warranty.

It is the customers responsibility to ensure the unit is mounted correctly. ABAX will not cover the costs to replace or swap a unit that is faulty due to an incorrect installation. Failure to mount the unit according to ABAX guidelines may also void your lifetime warranty.

ABAX5 technical specification:

- Dimension: 46x46x18mm
- Weight: <50g
- Water resistant: IP67
- Temperature resistant: (-20°C to +60°C)
- Sensors: Self-diagnostics, accelerometer, battery test
- GPS and GSM positioning
- Lifetime warranty
- Easy installation

2. GPS and GSM signal strength

GPS and GSM signals are impaired by metal. Therefore the unit should not be installed in a position where the metallic body of the vehicle can interfere with signal strength.

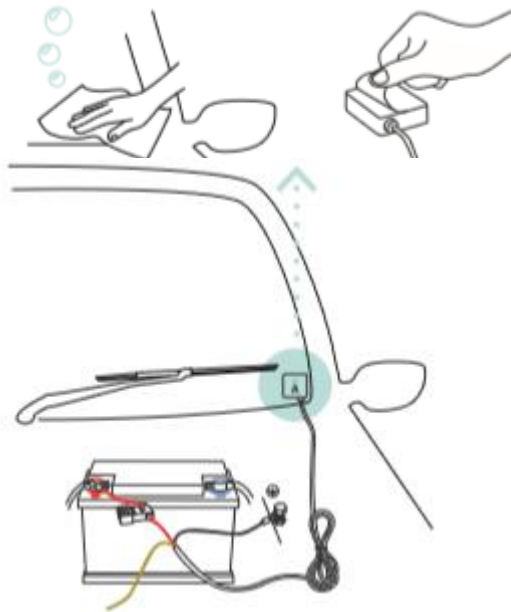
In order to operate effectively, the unit requires a constant line of sight to connect to GPS satellites. The unit will work effectively when concealed under non-metallic materials such as plastic or glass, but efforts must be made to ensure metallic surfaces do not cover or interfere with the unit and affect signal strength.

“Approximately 95% of all Customer Service queries regarding poor signal, are a result of metallic interference.” Petter Skaug – Customer Service Director

If you wish to check the signal strength of your unit, ABAX Customer Service is available 24/7 on 01733 698 888.

3. Windshield installation

- a) Before mounting, decided on a position that will not interfere with the windscreen wipers.
- b) Clean and dry the mounting area with the supplied cleansing wipe. A wet windshield will ruin the adhesive sticker.
- c) Feed the cable underneath the vehicle bonnet ensuring it does not get pinched. Connect the red wire to the positive vehicle battery terminal. Connect the black wire to the negative vehicle battery terminal. The fuse is located at the red (positive) wire. Never replace the fuse with other values than indicated on the product label.
- d) If the unit is receiving power, the LED light will blink red for 1 minute, and then blink blue for up to 9 minutes. When start up is complete, the LED will stop blinking. You do not need to wait for this process to complete.
- e) Please make note of the vehicle registration number, vehicle mileage and the main driver. Give these details to your administrator together with the units MUF-number which is located on the box.



4. Concealed external installation

For practical, aesthetic or security purposes, some customers prefer a concealed installation. This is possible, but do not mount the unit under metal as it may interfere with GPS signal strength. Usually, the best location is under the plastic scuttle panel.

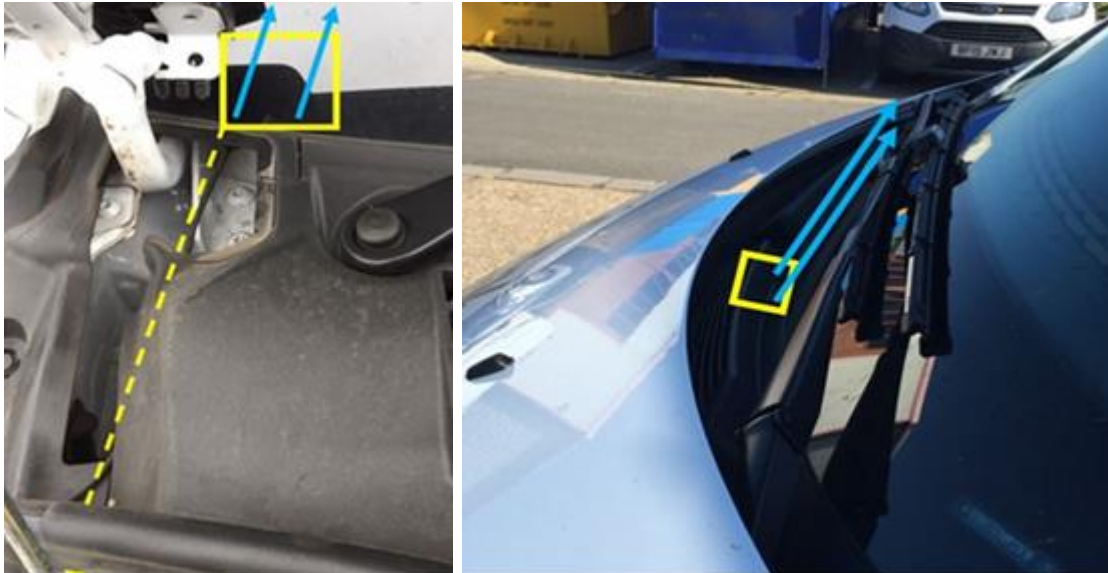
a) Decide on a mounting position.

b) Clean and dry the mounting area with the supplied cleansing wipe. A wet windshield will ruin the adhesive sticker.

c) Feed the cable ensuring it does not get pinched. Connect the red wire to the positive vehicle battery terminal. Connect the black wire to the negative vehicle battery terminal. The fuse is located at the red (positive) wire. Never replace the fuse with other values than indicated on the product label.

d) If the unit is receiving power, the LED light will blink red for 1 minute, and then blink blue for up to 9 minutes. When start up is complete, the LED will stop blinking.

e) Please make note of the vehicle registration number, vehicle mileage and the main driver. Give these details to your administrator together with the units MUF-number which is located on the box.



5. Concealed internal installation (battery in the cabin)

When the vehicle battery is not located under the bonnet, it is possible to conceal the unit inside the vehicle. Remember, do not mount the unit under metal as it may interfere with GPS signal strength. Some good locations include the top of the dashboard, inside the A-pillar or inside the dashboard (placed as high up as possible to get the best possible signal).

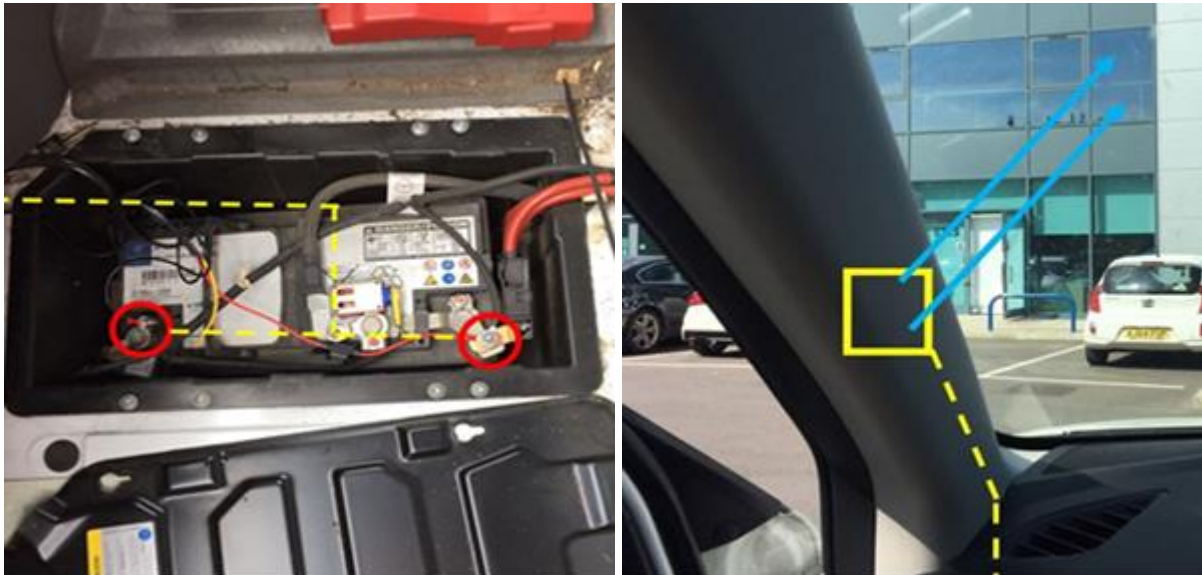
a) Decide on a mounting position.

b) Clean and dry the mounting area with the supplied cleansing wipe. A wet windshield will ruin the adhesive sticker.

c) Feed the cable ensuring it does not get pinched. Connect the red wire to the positive vehicle battery terminal. Connect the black wire to the negative vehicle battery terminal. The fuse is located at the red (positive) wire. Never replace the fuse with other values than indicated on the product label.

d) If the unit is receiving power, the LED light will blink red for 1 minute, and then blink blue for up to 9 minutes. When start up is complete, the LED will stop blinking.

e) Please make note of the vehicle registration number, vehicle mileage and the main driver. Give these details to your administrator together with the units MUF-number which is located on the box.



6. Inaccessible battery installation

If the vehicle battery is inaccessible, jump-start points or fuse boxes under the bonnet can be used to power the unit. This will require the unit to be earthed somewhere on the vehicle, such as an earth stud or chassis bolt.

